



# **INSTALLATIONS GUIDELINES FOR END MATCHED BOARDING**

## 1. Preparation

Preparing the surface under end matched boarding must be in accordance with local construction requirements and standards. Depending on the location of installation, battens, heat insulation, damp protection and, if required due to the way the boarding is installed, also counter-battens for creating air flow must be additionally installed. In most cases, installing counter-battens (thickness 20–25 mm) is necessary for a flat surface and required ventilation.

The spacing between the counter-battens may not be bigger than the distance a single board covers and not more than 600 mm (table 1). If you want to use boards with different lengths, you should take into account the distance covered by the shortest board in calculating the spacing between counter-battens.

Since it is possible to install end matched boarding in a pattern, additional counter-battens must be taken into account in that case, so that it would be possible to attach each board. For the proper instalment of boarding, it is important that the counter-battens under the boarding are on the same level and perfectly levelled.

NB! Depending on the chosen boarding, measurements of the room, corners and the position of window and door openings, it is necessary to determine the division of the boarding before fastening the counter-battens, in order to avoid boards with short and different measurements at the end of the row.

**Table 1.** Data on end matched boarding

Overall length (mm)	Max. length of counter battens (mm)
293	285
578	570
1148	600

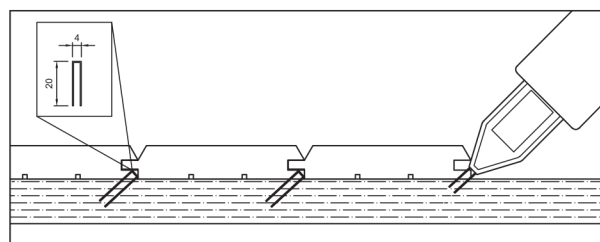
Before installing the boarding, their level of humidity must level with the humidity of the room. For that reason, remove the packaging from the boarding.

It is recommended to use wood protection products for the boarding before installing them. Make sure that the wood protection product is suitable for using in that specific room.

## 2. Horizontal installation of boarding

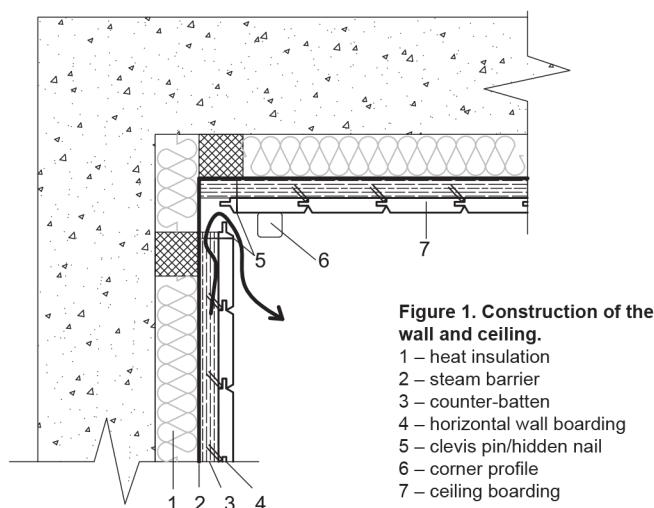
Start the installation of boarding from the top board row. Should you also wish to install boarding to the ceiling, start with that, see paragraph 4. In installing the boarding, use a clamp pistol and 4.0×20 mm U clamps (see Figure 1). If necessary, regulate the clamp pistol so that the clamps would not disturb the instalment of the next board, the clamps must also not pierce the groove of the board completely.

The boards of the first row must be attached with countersunk head nails or clevis pins also from the side of the peg, the rest of the boards only from the side of the groove of the boarding (Figure 2). The boards should definitely not be installed in a way that the side of the groove stays on top. A sufficient gap must be left between the ceiling and the first row of the boarding in order to guarantee the movement of air.



**Figure 1.** Attaching the boarding with a clamp pistol next to the groove of the board.

Check with a level gauge that the first row of the boarding is installed straight because inaccuracies will magnify in the next rows. In addition, check the accuracy of the installation with a level gauge at least after every three rows.



Make sure that the peg part of every next board would fit precisely into the grooves of the next boards.

Leave a sufficient gap between the boarding row and the floor of the sauna and washrooms so that the water that happens to be on the floor will not damage the boarding.

In order to avoid the overlap of the end matched boarding's joints, begin the next row with a half-sized board. It is also possible to use up the remaining parts of the last board of the previous row. In that way, you can use up all the material, but the end result will not be an even brick pattern.

If you install end matched boarding onto several walls, you should move forward with the boarding row by row on all of the walls at the same time to achieve a better match at the corners. (Figure 3).



**Figure 3.** Installing horizontal boarding (length of the board 293 mm).

## 3. Vertical installation of boarding

Begin with installing the boarding from the top corner as well; leave the peg of the board towards the inner corner and the end groove with a downwards direction (Figure 4). The first board is attached both from the side of the peg and the groove, the next ones only from the groove side of the board. Leave a gap of at least 10 mm between the first and last row and the adjacent corner or wall. Later cover the gap with a corner profile.

Check the precision of installing the boarding with a level gauge at least after every three rows.



**Figure 4.** Installing vertical boarding in the case of a double counter-batten (length of the board 293 mm).

## 4. Installing boarding to the ceiling

Should you also wish to install boarding to the ceiling, you should begin the instalment exactly from there and then move on to installing boards onto walls. The instalment is similar to the instalment of horizontal wall boarding. A sufficient ventilation gap must be left between the first row of the boarding and the adjacent wall, as well as between the last row of the boarding and the wall.

## 5. Additional information

Due to their profile, end matched boarding has many different ways of installation. It is possible to combine boards with different lengths and types of timber. As a result, it is possible to form many unique solutions. In such cases, consult the vendor of the material who is able to give more precise instructions for preparing the surface, about how much material you need, etc.